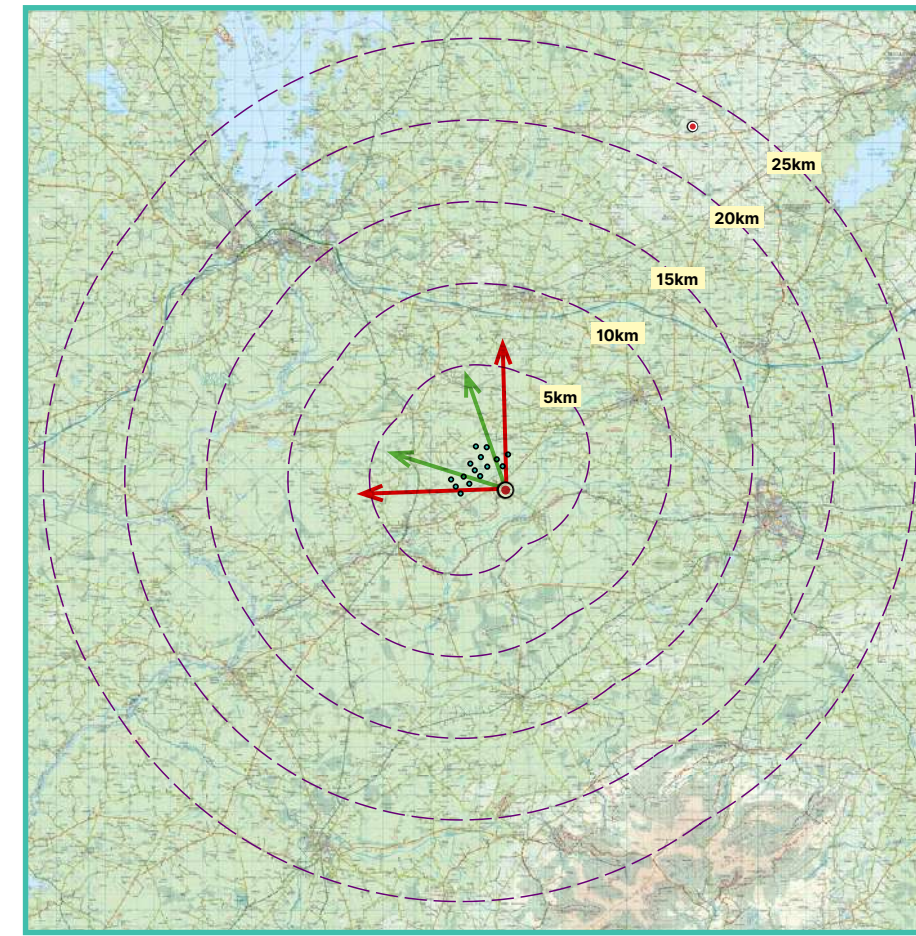


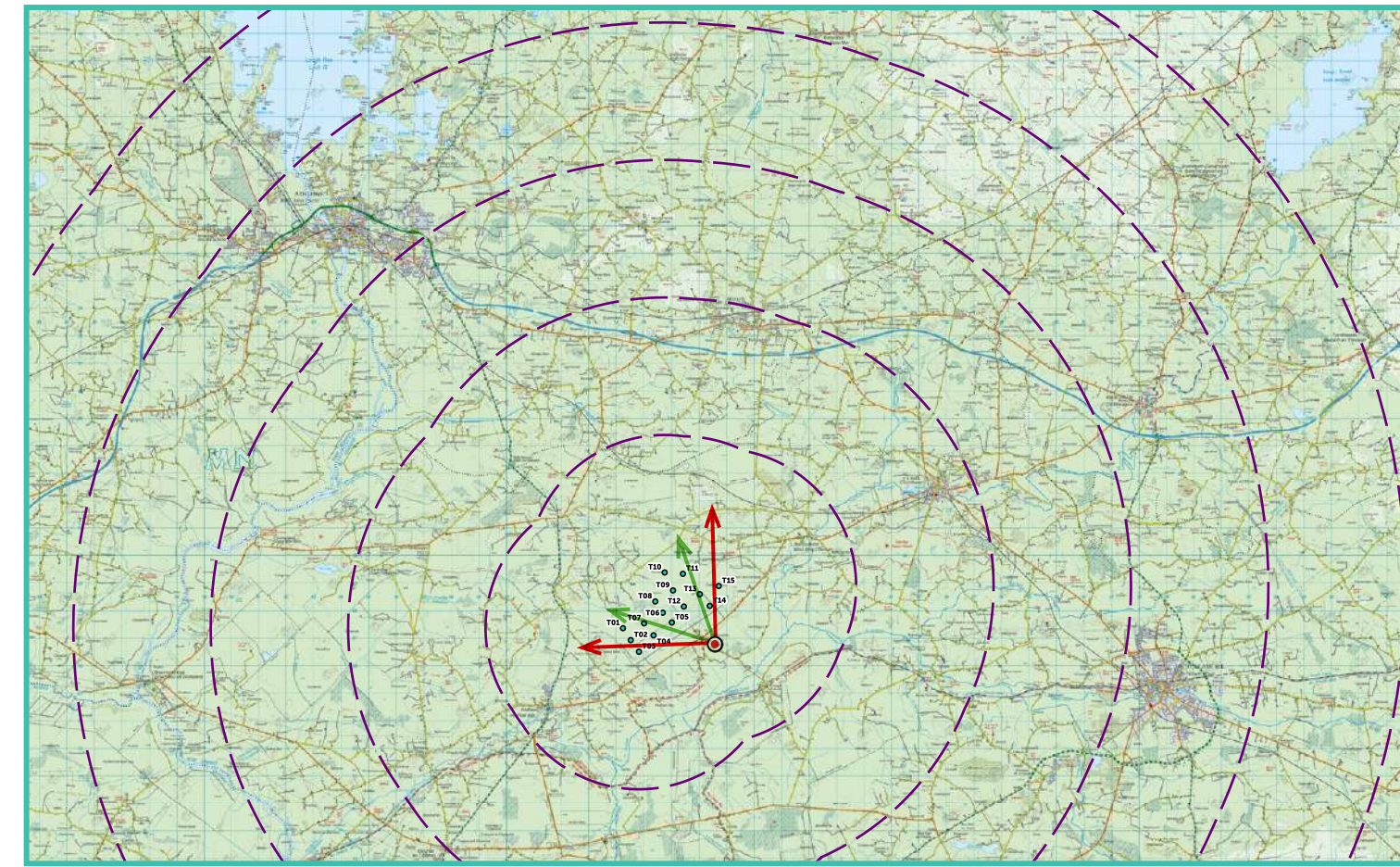
## Photomontage 14

View from Lemanaghan Hermitage, located approximately 1.28km south of the nearest proposed turbine (T14). This viewpoint was requested by the National Monuments Service (NMS).

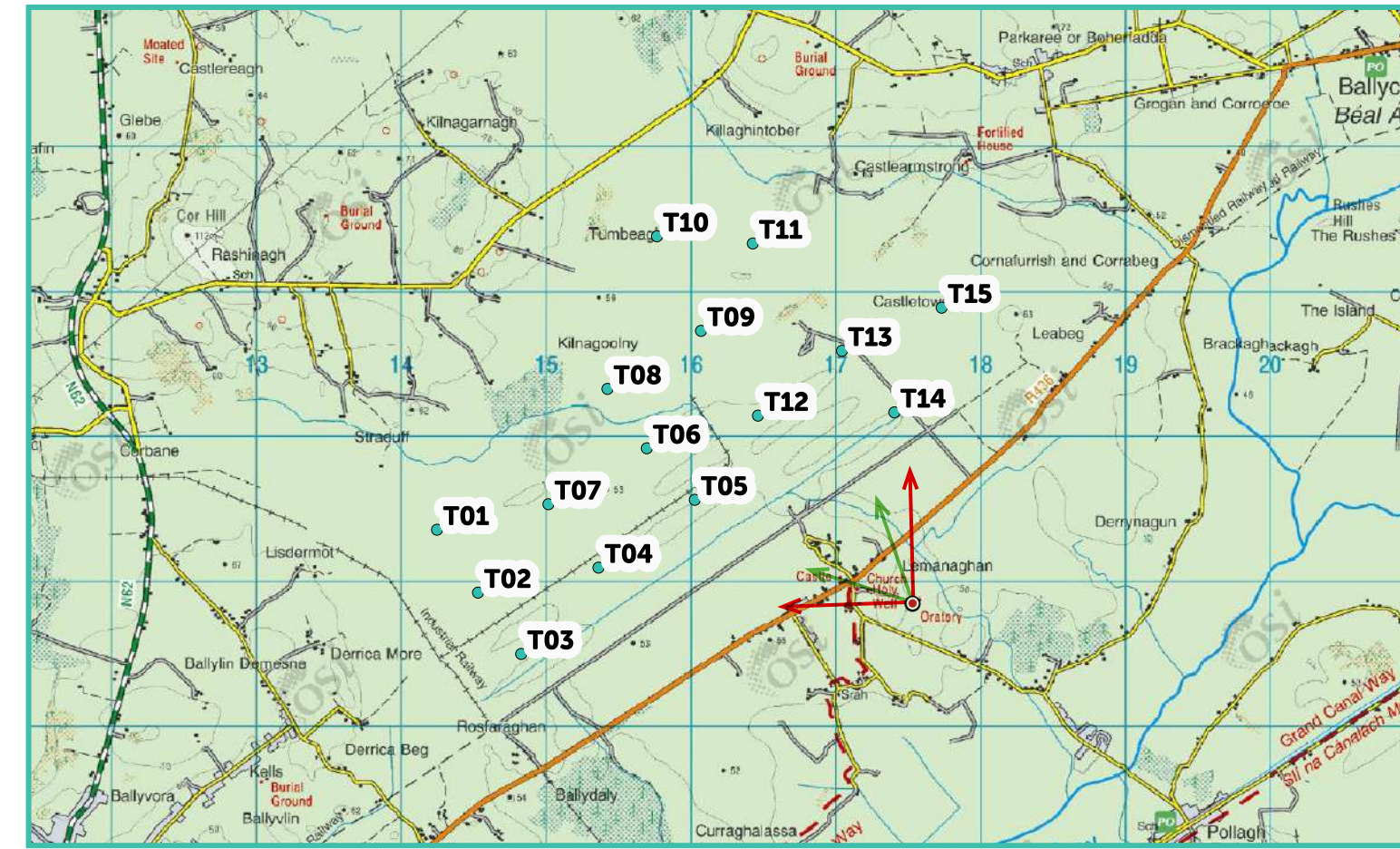
View point grid reference	E 617527 N 726917
Date of image taken	2025-12-12
Time of image taken	11:03
View point elevation	49m
Angle of Views	90° / 53.5°
View Direction (Image Centre)	314°
Horizontal extent of proposed turbines	5°
Turbine Hub Height	145m
Turbine Rotor Diameter	150m
Turbine Tip Height	220m
Montage Type	Type 4* Photomontage / Photowire / Survey / Scale Verifiable
Camera & Lens	Canon 5D Mark III / Full Frame Sensor with a 50mm Lens
Tripod	Manfrotto 190X extended to approx 1.5m.
Map Licence	©Ordnance Survey Ireland. All rights reserved. Licence number CYAL50267517



View point relative to 25km radius.



View point relative to proposed wind farm site.



Detail of view point location.

## Map Legend

- Area shown in 90° view
- Area shown in 53.5° view
- View Point

## Wireline Legend

- Proposed Lemanaghan Wind Farm
- Existing Wind Farms
- Permitted Wind Farms
- Proposed Wind Farms
- Proposed Met Mast
- Knockastia

Prepared by

MKO  
Planning & Environmental Consultants  
Tuam Road, Galway.

Tel: (091) 73 56 11  
E-mail: info@mkoireland.ie  
Website: www.mkoireland.ie

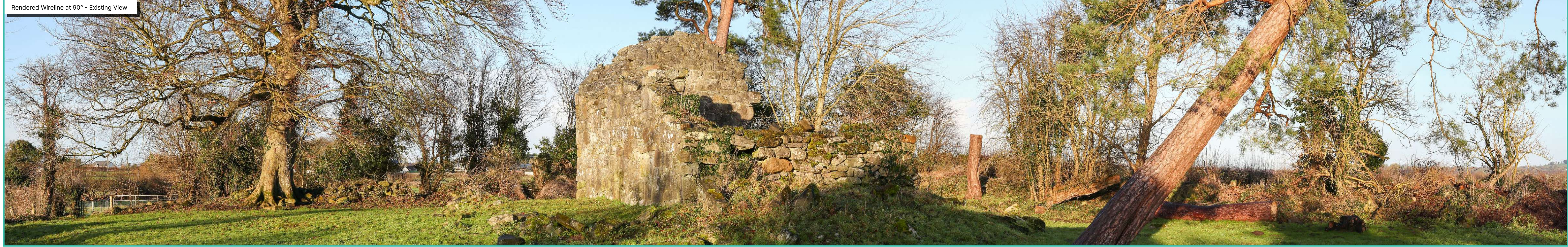


90° View Extent

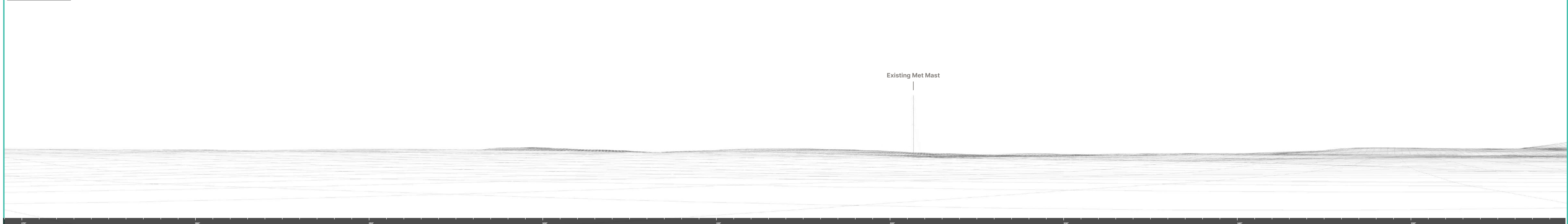
Key Image at 120°



53.5° View Extent



Matching Wireline

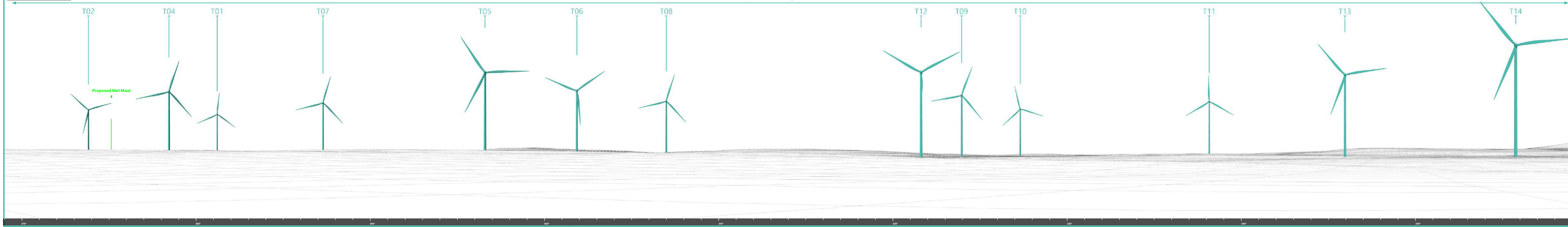


Rendered Wireline at 90° - Proposed View with Cumulative - Requested by the National Monuments Service (NMS)



Matching Wireline

Proposed Lemanaghan Wind Farm



Rendered Wireline at 53.5° - Proposed View with Cumulative - Requested by the National Monuments Service (NMS)



Proposed Lemanaghan Wind Farm

